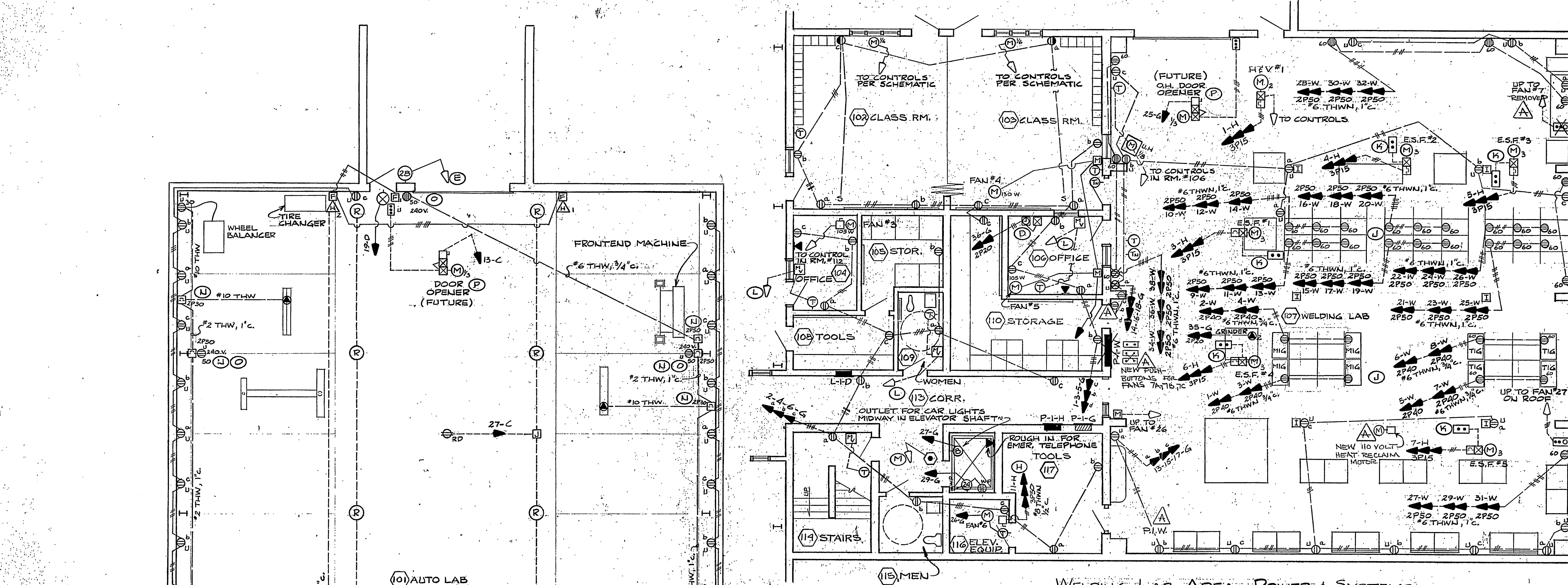


NOTE:
WIRING FOR ELECTROSTATIC FILTERS (E.S.F.) ARE TO BE
BID AS ALTERNATE #9



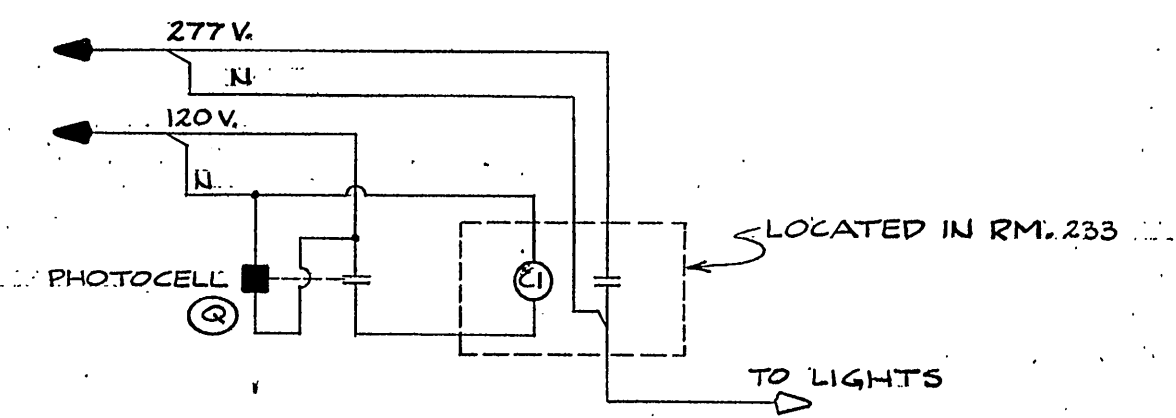
WELDING LAB AREA - POWER & SYSTEMS

NOTES:

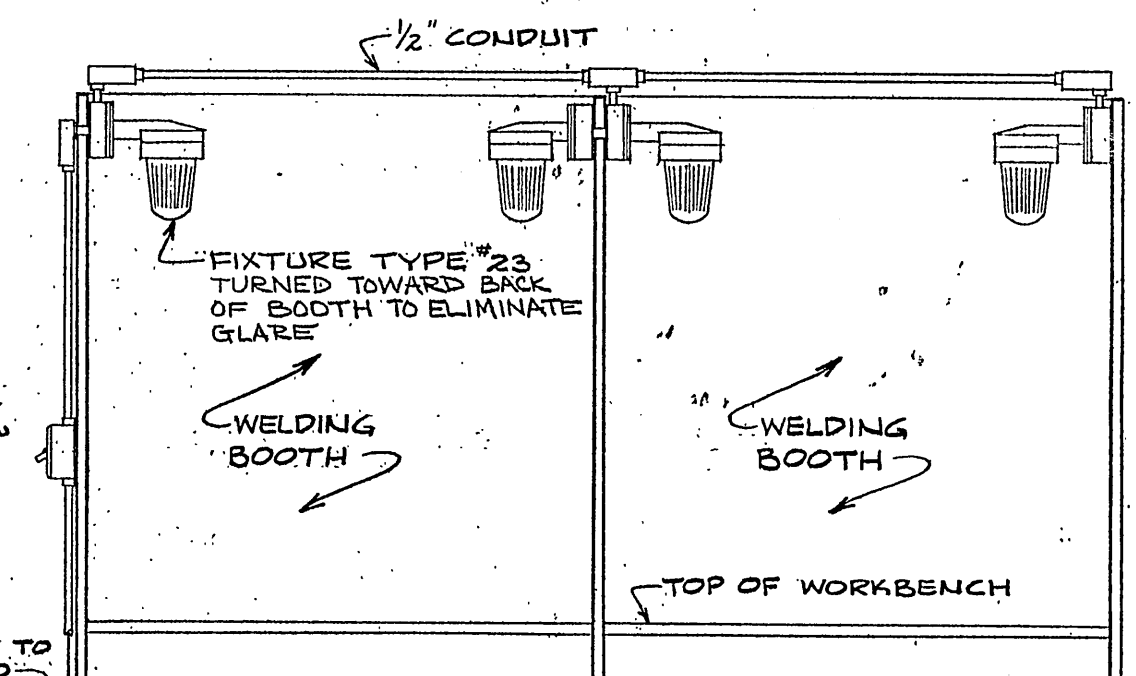
- (1) TIME CLOCK & CONTACTORS TO CONTROL NIGHT SET BACK FOR H.E.V.
- (2) TO LIGHTING CONTACTOR IN RM. 233
- (3) WIRE FOR PHOTOCELL & LIGHT TO CONTACTOR IN RM. 233
- (4) CIRCUIT BREAKER SIZED FOR 25 HP ELEVATOR ELECTRICAL CONTRACTOR TO VERIFY HP & ADJUST CIRCUIT BREAKER & WIRING SIZE TO BE COMPATIBLE WITH ACTUAL MOTOR SIZE
- (5) ALL WELDER OUTLETS SHALL BE CROUSE-HINDS ARE 6333 & MATCHING PLUGS ARE 6375 OR EQUAL BY KILLARK USE EXISTING WELDER POWER CORDS EXCEPT IF DEFECTIVE OR INSUFFICIENT NUMBER OF CONDUCTORS, THEN IT SHALL BE REPLACED. MOUNT OUTLET UNDER WORK SURFACE HIGH AS POSSIBLE. WELDER TO BE STOWED UNDER BENCH

NOTES:

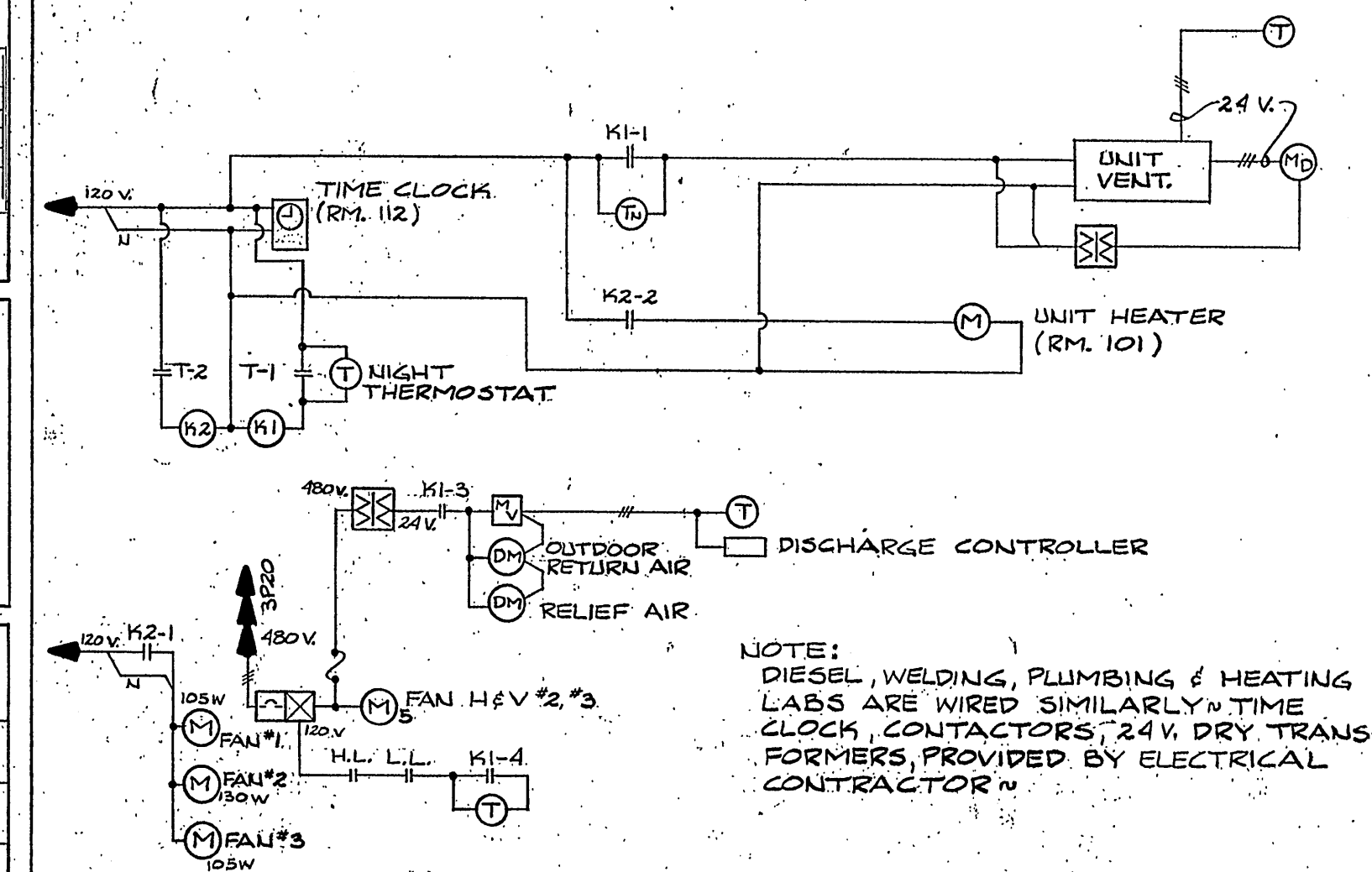
- (6) LOCATE ON SIDE OF WELDING BOOTH 5'-0" A.F.F. TYPICAL ALL 5 E.S.F.'s
- (7) TO 24V SUPPLY TRANSFORMER IN RM. 233. SIZE TO BE AS DIRECTED BY H.E.V. CONTROLS CONTRACTOR
- (8) WIRE TO ELEVATOR CONTROLS
- (9) 88 FRAME CIRCUIT BREAKER IN NEMA 12 ENCLOSURE, 4'-6" A.F.F.
- (10) OUTLET TO BE BRYANT #9650-FR WITH MATCHING S.S. COVER. PROVIDE MATCHING CORD PLUG. BRYANT #9650 AMP FOR EXISTING WELDERS IN AUTO, DIESEL, PLUMBING & HEATING
- (11) WIRE HOMERUN TO JUNCTION BOX FOR FUTURE DOOR OPENER
- (12) TYPICAL #3010 PHOTOCELL MOUNT IN CAST BOX 1'-6" BELOW EAVES & WIRE TO CONTACTOR AS DETAILED



PHOTOCELL/CONTACTOR WIRING SCHEMATIC



WELDING BOOTH LIGHT FIXTURE MOUNTING DETAIL
NOT TO SCALE



TYPICAL SCHEMATIC TIME CLOCK, FAN, & H.E.V. CONTROL-AUTO LAB
NOT TO SCALE